



Family of Shaft Grounded
Bearing Isolators

BOLD

NEW WORLD



THE NEXT REVOLUTION IN
BEARING ISOLATOR TECHNOLOGY



Garlock
SEALING TECHNOLOGIES®

an EnPro Industries company



Have your bearings been damaged by electrical discharges?

When electric induction motors are driven by variable frequency drives (VFD), damaging electrical voltages are induced onto the motor shaft and will discharge through the motor's bearings causing premature bearing failure. Shaft voltages are present the moment the drive is turned on. Damage to the bearings and the lubrication can occur long before there is a catastrophic failure. By the time you hear the audible noise caused by the fluting damage in the bearing, it is already too late! It is important to protect the motor's bearings from ingress and electrical damage right from the start to avoid failures, costly down time, or complete replacement.

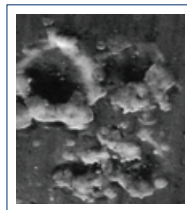
How can you tell if the bearings are damaged?

Damaging voltages can be detected early with shaft voltage measurements for any motor operated by a VFD. Vibration analysis is another method to detect and monitor electrical bearing damage. A good indicator of a fluted bearing close to catastrophic failure is to simply listen to the system. Bearing deterioration can be heard as a loud audible noise!



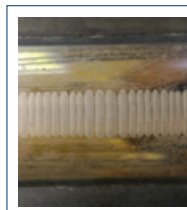
Lubrication deterioration

Bearing protection is not just about ensuring the lubrication stays clean and retained, but also ensuring the quality of the lubricant is maintained. Continuous electrical arcing in the motor bearings will often rapidly deteriorate the quality of the lubrication and cause bearing race damage. When an arc occurs, the lubrication is super heated and causes lubrication break-down. The grease will often have a burnt/black appearance instead of the normal "clean" color. Deterioration of the grease will also result in a greatly shortened bearing life.



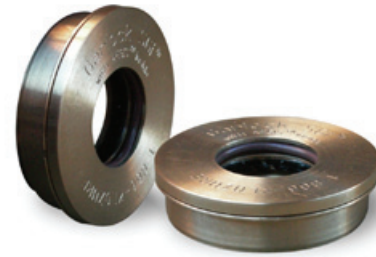
EDM pitting and micro craters in rolling elements

Electrical Discharge Machining (EDM) is an electrical arc that is created when the shaft voltage overcomes the dielectric of the oil film between the rolling element and the bearing race. The electrical current arcs through the oil and grease and melts the steel race wall creating a pit in the surface between 5 to 10 micron diameter. These pits are visible to the eye in the form of a light colored track on the bearing race. Over time the micro craters can result in fluted bearing races.



Bearing Fluting

Bearing fluting is an accelerated "wash-board" wear pattern in the bearing race as a result of continued EDM pitting. As the rolling element travels over already damaged areas, more damage occurs. High system vibration and noise are often the result of bearing fluting which will result in costly system failure.



Garlock SGi™ Family – The ultimate protection for your bearings

What happens when you merge the world's best bearing isolator technology, the GUARDIAN™, with the industry leader in shaft current mitigation technology, AEGIS™? You have the birth of the Garlock SGi...the Garlock Shaft Grounded Isolator! The GUARDIAN has proven time and time again to be the absolute best bronze bearing isolator on the market for ingress and egress protection, no question. Similar to the GUARDIAN, AEGIS Shaft Grounding Ring has proven to be the only maintenance-free and long term reliable shaft voltage mitigation technology. When you merge these great technologies into one product, the result is truly remarkable and something no other can offer...a maintenance-free bearing isolator ensuring the highest level of ingress and egress protection with the added protection of shaft grounding!

Growing from the Guardian Bearing Isolator family, the SGi is now available in three configurations to serve your application requirements:

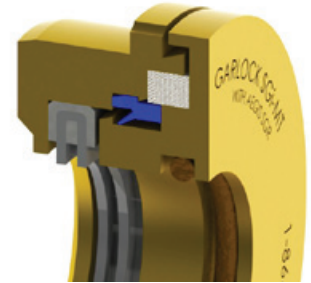
- SGi merges the world's best bearing isolator technology, the GUARDIAN™, with the industry leader in shaft current mitigation technology, AEGIS™
- SGi™-180 is a maintenance friendly split SGi, designed to reduce installation time and keep your equipment producing.
- SGi™-MT uses the Micro-Tec® filter technology with the SGi to effectively protect your equipment in heavily contaminated environments.



SGi™



SGi™-180



SGi™-MT

Speed	0 to 12,000 f/m	0 to 4,500 f/m	0 to 4,500 f/m
Protection	IP56	IP55	IP56
Standard Width	.570"	.905"	.800"
Minimum Cross Section	.500"		
Construction	Bronze w/ Fluoroelastomer O-ring		
Size Range	0.875" to 6.000"		
Axial Motion	0 to 0.025"		
Shaft-to-Bore Misalignment	0 to 0.020"		
Temperature Range	-22°F to 300°F		
Shaft Grounding	AEGIS™ Shaft Grounding Ring		

*Contact Garlock for any special inquiries

To learn more about how to protect your bearings or other sources of electrical damage, visit www.garlock.com and download our whitepaper.

AUTHORIZED REPRESENTATIVE

2008 RECIPIENT OF
ENVIRONMENTAL
PROTECTION AGENCY'S

**CLEAN
AIR**
Excellence
Awards

Warning: Properties/applications shown throughout this brochure are typical. Your specific application should not be undertaken without independent study and evaluation for suitability. For specific application recommendations consult Garlock. Failure to select the proper sealing products could result in property damage and/or serious personal injury. Performance data published in this brochure has been developed from field testing, customer field reports and/or in-house testing. While the utmost care has been used in compiling this brochure, we assume no responsibility for errors. Specifications subject to change without notice. This edition cancels all previous issues. Subject to change without notice.

Garlock

SEALING TECHNOLOGIES®

an EnPro Industries company

Garlock Sealing Technologies
1666 Division Street
Palmyra, New York 14522 USA
1-315-597-4811
1-800-448-6688
Fax: 1-800-543-0598
1-315-597-3039

www.garlock.com

Other Garlock facilities are located in:

Columbia, SC, USA	Phone 1.803.783.1880	Fax 1.803.783.4279
Paragould, AR, USA	Phone 1.870.239.4051	Fax 1.870.239.4054
Houston, TX, USA	Phone 1.315.597.4811	Fax 1.315.597.3216
Denver, CO, USA	Phone 1.303.988.1242	Fax 1.303.988.1922
Sydney, Australia	Phone 61.2.9793.2511	Fax 61.2.9793.2544
Auckland, New Zealand	Phone 64.9573.5651	Fax 64.9573.5636
São Paulo, Brazil	Phone 55.11.4352.6161	Fax 55.11.4352.8181
Sherbrooke, Canada	Phone 1.819.563.8080	Fax 1.819.563.5620
W. Yorkshire, England	Phone 44.1422.313600	Fax 44.1422.313601
Saint-Étienne, France	Phone 33.4.7743.5100	Fax 33.4.7743.5151
Neuss, Germany	Phone 49.2131.3490	Fax 49.2131.349.222
Mexico City, Mexico	Phone 52.55.5078.4600	Fax 52.55.5368.0418
Singapore	Phone 65.6285.9322	Fax 65.6284.5843
Shanghai, China	Phone 86.021.64544412	Fax 86.021.34080906
Dubai, UAE	Phone 971.4.8833652	Fax 971.4.8833682
Pune, India	Phone 91.20.3061.6608	Fax 91.20.3061.6699